

Vari-Flow® EC Motors

Available on ACE, ACW, ACRU, VCR, SQN,
XWD and CPV models



Electronically Commutated (EC) motors offer significantly improved energy efficiency and controllability over traditional fractional HP motors.

EC motors are totally enclosed, non-ventilated (TENV) and have an adjustable speed range from 500 to 1725 rpm. These motors are offered in 1/6, 1/4, 1/2, 3/4 and 1 HP for single phase, 120-volt applications. They are available in 1/2, 3/4 and 1 HP as 208 or 230-volt single phase.



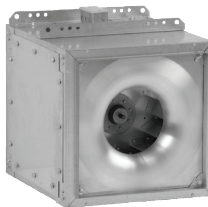
ACE-EC



ACW-EC



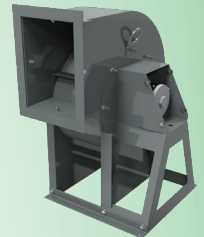
ACRU-EC / VCR-EC



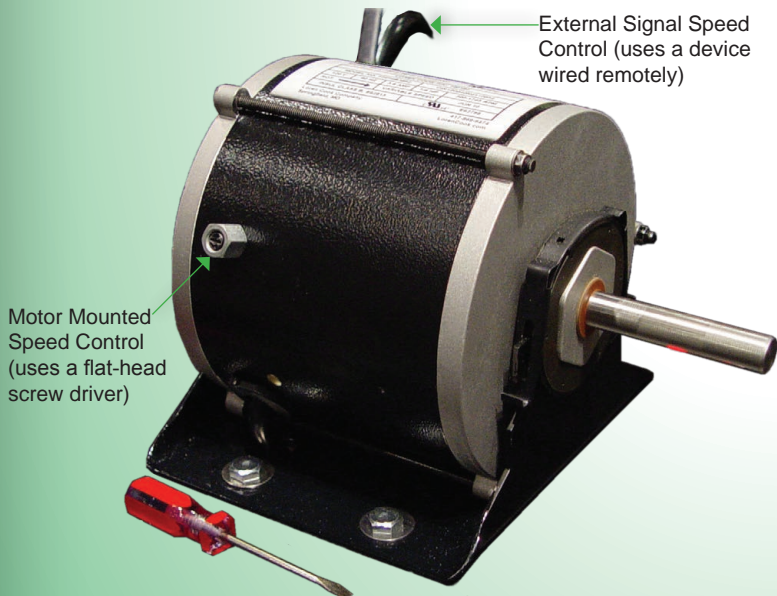
SQN-EC



XWD-EC



CPV-EC



Two control features in one motor

The **“Motor Mounted Speed Control”** feature is an integral potentiometer mounted on the exterior of the motor for precise adjustment of the motor speed. A screwdriver is used during field balancing to set the desired speed. This is a “set it and forget it” fan speed control.

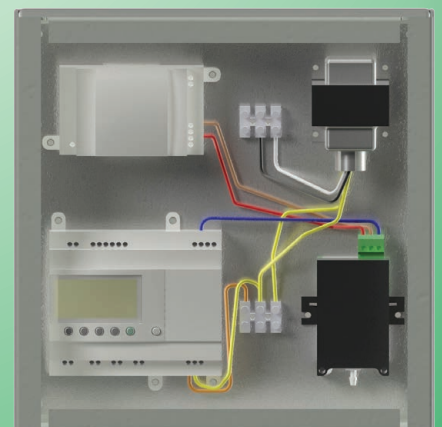
The **“External Signal Speed Control”** feature requires a 0-10 volt DC signal to adjust the speed of the motor during operation. The designer may choose to change fan speed due to changes in duct pressure, building load, temperature, time, etc. This EC motor can be paired with our optional fan speed control or pressure controller (both shown below) or connected to the building automation system.

Factory control options available for External Signal Speed Control

Fan Speed Control allows the fan speed to be adjusted remotely with an easy-to-read dial. The controller allows for adjustment from 30 - 100% of the fan speed. It requires 24-volt power for operation and is shipped loose for field installation.



Pressure Controller is for applications where the fan is intended to maintain a nearly constant pressure in the system. The integrated pressure transducer reads the pressure in the system and the pressure controller automatically adjusts the fan speed to maintain a preset value. It is shipped loose for field installation.



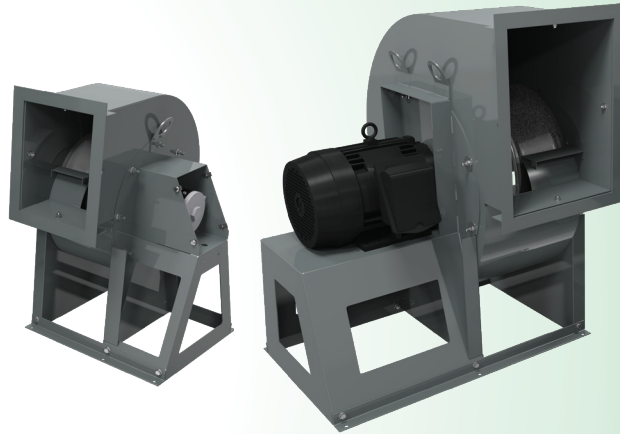
A wide range of Vari-Flow® EC Motors

Motor HP	1/6	1/4	1/2	3/4	1	1, 1-1/2, 2	3 - 30 *
Voltage	115v	115v	115v	115/208-230v	115/208-230v	208-230/460v	460v
Phase	1 ph	1 ph	1 ph	1 ph	1 ph	1 or 3 ph	3 ph
Motor RPM	1725	1725	1725	1725	1650	1140 & 1725	1140 & 1725

* 3 - 30 HP includes a permanent magnet motor and separate motor controller, provided by Cook.

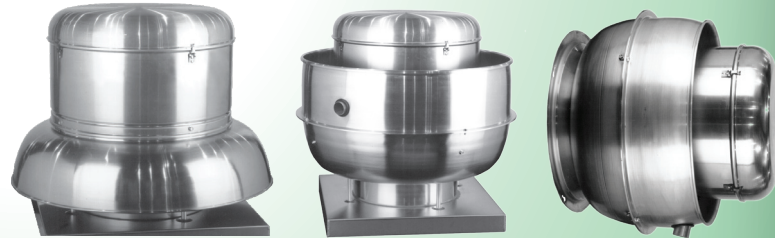
Direct Drive Utility Sets

Models	CPV-EC	CPV, CPS, CPS-A, CPA, CPA-A
Sizes	60 - 150	60 - 300
Airflow Range	50 - 3,000 CFM	50 - 20,000 CFM
Pressure Range	0 - 2" W.G.	0 - 8" W.G.
Motor Range	1/6 - 1 HP	1 - 30 HP
Motors	Vari-Flow® High Efficiency EC Motors with Internal or External Speed Control	Premium Efficiency AC Induction Motors or Vari-Flow® Ultra High Efficiency Permanent Magnet DC motors



Large Direct Drive PRVs

The proven design technology COOK has offered in large belt drive PRVs is now available in dozens of new direct drive ACED, ACRUD, ACWD & VCRD models (including high & extended pressure versions). These larger direct drive fans feature larger horsepower Premium Efficiency AC or Ultra High Efficiency Permanent Magnet DC motors in various motor speeds.

[illegible]